

# QUEENS COUNTY FARM MUSEUM 40th ANNUAL

---

# QUEENS COUNTY FAIR

---

## BLUE RIBBON COMPETITION - SEPTEMBER 9 & 10, 2023

---

**GET FREE ADMISSION TO COUNTY FAIR ON FRI + SAT WITH BLUE RIBBON ENTRY**

Help us celebrate the 40th anniversary of the Queens County Fair! Enjoy pie eating and corn husking contests, hayrides, live entertainment on two stages, roaming acts, a historic tractor exhibition, carnival rides, and midway games. Check out local craft and food vendors and connect with community tablers. Plus, it's the inaugural weekend of the all-new 2023 Amazing Maize Maze — be the first to navigate your way through the corn field to Victory Bridge.

Kick off the weekend at Friday Night's Opening Ceremony, featuring a live Motown concert with Dr. K's Motown Revue. Free entry for Blue Ribbon Competitors!

This traditional agricultural fair boasts Blue Ribbon competitions in produce, arts & crafts and more. All entry categories are offered in Adult and Youth Divisions.



**ENTER THE 2023 BLUE RIBBON COMPETITION TODAY!**  
**VISIT [BIT.LY/43DNGIV](https://bit.ly/43DNGIV)**  
**OR SCAN QR CODE TO REGISTER**

# QUEENS COUNTY FARM MUSEUM

## BLUE RIBBON COMPETITION – SEPTEMBER 9 & 10, 2023

### WHAT YOU MAY ENTER

Each person may enter ONE item per category/class. All entries must be submitted in the name of the owner of the entry. Competition open to individuals; businesses are not eligible.

### DELIVERING EXHIBITS TO THE FAIR

Exhibits are accepted on **Fri, September 8th between 2:00–8:00pm\*** sharp at Queens Farm (73-50 Little Neck Pkwy, Floral Park, NY 11004). Please go to Barn Building. Registration closes Fri, September 8th at 8pm.

*\*Exception: Saturday drop-offs between 8-9am ONLY with prior written notice to [blueribbon@queensfarm.org](mailto:blueribbon@queensfarm.org).*

Please label all entries with full name, address, phone, category number, and age division (Youth or Adult).

### PICKING UP EXHIBITS

No exhibit may be removed prior to 6:00 pm on Sunday, September 10th. NO EXCEPTIONS.

### JUDGING

Entries will be judged by Saturday afternoon, September 9th. Adult and Youth entries will be judged separately. Youth entries will also be judged within each age group. Decision of the judges is final.

### PRIZES

First, second, third and honorable mention ribbons will be awarded. Best in Show in each division will be awarded at 1:30pm on Saturday, 9/9 on Main Stage.

### ENTRY FEES

None

### SAFETY OF EXHIBITS

The Fair Committee will exercise all possible care for the safety of exhibits. During public hours all exhibits will be attended by staff & volunteers. Security will patrol the fairgrounds at night. However, Queens County Farm Museum assumes no responsibility in case of loss or damage from any cause and entries are made and accepted with this understanding.



### GET FREE ADMISSION TO COUNTY FAIR WITH YOUR BLUE RIBBON ENTRY

- **FRIDAY 9/8: OPENING CEREMONY**
- **SATURDAY 9/9: AWARDS CEREMONY 1 PM**

# ARTS/CRAFTS

**RULES:** Items previously exhibited at this fair may not be entered. Only one entry per category. Up to 3 entries per person (no exceptions). Only original work will be accepted. Work may be sold, but must remain on exhibit until 6:00 pm Sunday evening, September 10th. All work will be judged on the basis of originality and workmanship. See individual category for requirements. Each piece must include a 3" x 5" card with full name, address, phone, category number, and age division (Youth or Adult). If your art or craft is not listed, a category will be assigned (excluding photography). Adult & Youth entries accepted in all categories.

**PRIZES:** Engraved award to Best in Show. First, second, third and honorable mention ribbons in all categories.

## CATEGORIES

### A. PATCHWORK QUILTING

- A100 Bed size, *hand quilted*
- A101 Bed size, *machine quilted*
- A102 Crib size, *hand quilted*
- A103 Crib size, *machine quilted*
- A104 Pillow
- A105 Wall hanging (3'x 4' max, *ready to hang*)
- A106 Article of Clothing
- A107 Other

### B. APPLIQUÉ QUILTING

- B100 Bed size, *hand quilted*
- B101 Bed size, *machine quilted*
- B102 Crib size, *hand quilted*
- B103 Crib size, *machine quilted*
- B104 Pillow
- B105 Wall hanging (3'x 4' max, *ready to hang*)
- B106 Article of Clothing
- B107 Other

### C. AFGHANS

- C100 Crocheted, *full size*
- C101 Crocheted, *crib size*
- C102 Knitted, *full size*
- C103 Knitted, *crib size*
- C104 Other

### D. EMBROIDERY

- D100 Cross Stitch
- D101 Needlepoint
- D10 Petit point

- D103 Crewel
- D104 Other

### E. KNITTING

- E100 Article of Clothing
- E101 Tablecloth
- E102 Accessory

### F. CROCHETING

- F100 Article of Clothing
- F101 Tablecloth
- F102 Accessory

### FF. OTHER

- FF100 Macrame
- FF200 Stenciling
- FF300 Mosaic

### G. SEWN CLOTHING

- G100 Period Attire
- G101 Costumes

### GG. NEEDLEWORK

- GG100 Other

### H. BASKETRY

- H100 All Methods

### I. JEWELRY

- I100 Beaded
- I101 Other

### J. SCULPTURE

- J100 Wood
- J101 Clay
- J102 Metal
- J103 Soft Sculpture

### K. STAINED GLASS

- K100 All Methods

### L. HOOKING

- L100 Traditional Rug (2'x4' max, *ready to hang*)
- L101 Traditional Wall Hanging (2'x3' max, *ready to hang*)

- L102 Latch Hook Rug (2'x4' max, *ready to hang*)

- L103 Latch Hook Wall Hanging (2'x3' max, *ready to hang*)

### M. POTTERY

- M100 Slab Method
- M101 Coil
- M102 Thrown on wheel

### N. PHOTOGRAPHY

*Max 8" x 10" or 11" x 14" matted. Entries must be framed and ready to hang.*

- N100 Images taken at Queens County Farm Museum

- N101 Other photography

### O. PAINTINGS AND DRAWINGS

*Special instructions for this category apply. NO EXCEPTIONS. All entries MUST have wire or heavy string attached for hanging purposes. No item may be more than 2' x 3', including frame.*

- O100 Pastels (*under glass*)

- O101 Oils

- O102 Dried Medium (*under glass*)

- O103 Watercolor (*under glass*)

- O104 Pen and Ink (*under glass*)

- O105 Acrylic

- O106 Mixed Media (*under glass*)

- O107 Woodcut





# CULINARY ARTS

**RULES:** Only one entry per category. Entries must be made from scratch. Baked goods must be submitted in a clear, resealable container or freezer bag. Jams, jellies, etc. to be jarred with paraffin removed. No entry requiring refrigeration will be accepted. Entries will be judged on taste, texture & appearance. Fancy cakes will be judged primarily on creative decoration, taste and texture will be considered in the event of a tie. Adult & Youth entries accepted in all categories.

**PRIZES:** Engraved award to Best in Show. First, second, third and honorable mention ribbons in all categories.

## CATEGORIES

### A. JELLIES

- A-1 Single Fruit
- A-2 Combination Fruit
- A-3 Other

### B. JAMS

- B-1 Single Fruit
- B-2 Combination Fruit
- B-3 Other

### C. PRESERVES

- C-1 Single Fruit
- C-2 Combination Fruit
- C-3 Other

### D. PICKLES

- D-1 Bread & Butter Pickles
- D-2 Combination Pickles
- D-3 Sweet Pickles
- D-4 Watermelon Pickles
- D-5 Dill Pickles
- D-6 Pickled Vegetable, *one variety*
- D-7 Pickled Vegetable, *mixed variety*
- D-8 Spicy Vegetables
- D-9 Other

### E. CONDIMENTS

- E-1 Relish

- E-2 Chili Sauce
- E-3 Tomato Catsup
- E-4 Chutney
- E-5 Mustard
- E-6 Flavored Vinegar
- E-7 Other

### F. YEAST BREADS

- F-1 White
- F-2 Whole Grains
- F-3 Ethnic
- F-4 Rolls
- F-5 Other

### G. YEAST CAKES

- G-1 Coffee Cake
- G-2 Sweet Rolls
- G-3 Ethnic

### H. FROSTED CAKES

- H-1 White
- H-2 Yellow
- H-3 Chocolate
- H-4 Other

### I. FANCY CAKES

- I-1 Decorated

### J. UNFROSTED CAKES

- J-1 Angel Cake

- J-2 Fruit Cake
- J-3 Pound Cake
- J-4 Other

### K. SMALL SWEETS

- K-1 Brownies
- K-2 Butter Cookies
- K-3 Oatmeal Cookies
- K-4 Chocolate Chip Cookies
- K-5 Cupcakes
- K-6 Ethnic
- K-7 Other

### L. PIES

- L-1 Opened Pie
- L-2 Closed Pie

### M. QUICK BREADS

- M-1 Irish Soda Bread
- M-2 Muffins
- M-3 Scones
- M-4 Other

### N. SPICED CAKES

- N-1 Spice Cake
- N-2 Zucchini Cake
- N-3 Banana Cake
- N-4 Carrot Cake
- N-5 Combination
- N-6 Other



# VEGETABLES

**RULES:** Only ONE entry per person per class. No more than TWO entries per class from any one household. Home gardeners are invited to enter any agricultural class. However this section is OPEN ONLY TO PRIVATE GARDENERS: families, neighbors, or amateur groups sharing one garden. Professional farmers and their families are NOT eligible for this section. All entries must have been raised in New York by the exhibitor. Entries in root classes must be washed or brushed free of dirt. Clay pots must be washed or brushed free of dirt. Clay pots are to be used for potted classes. Leave ½" stem on tomatoes, beans, peppers, squash and pumpkins. ALL entries should be displayed on plain white paper plates. Ornamental containers will be disqualified. Berries must be displayed in standard plastic berry containers, enclosed in plastic baggies. Adult & Youth entries accepted in all categories.

**PRIZES:** Engraved award to Best in Show. First, second, third and honorable mention ribbons in all categories.

## STANDARDS FOR JUDGING:

**Individual Classes:** Uniformity in size and color. Free from disease, blemishes and mechanical injury. Trueness to type and variety. Correct labeling.

**Display Classes:** Quality of produce. Appearance & design of display. Numbers of vegetables & varieties displayed.

*Note: Judges reserve the right to reclassify entries that are not in correct categories.*

## CATEGORIES

### ROOTS, TUBERS & BULBS

- 12.200 Beets, 3 of any variety, tops on
- 12.201 Beets, 3 of yellow-orange variety, tops off
- 12.202 Turnips, 3 of any variety, tops on
- 12.203 Carrots, 5 of any short cylindrical variety, tops off
- 12.204 Carrots, 5 any medium long variety, tops off
- 12.205 Carrots, 5 any long variety, tops off
- 12.206 Carrots, 5 any round, miniature or novelty type, tops off
- 12.207 Onions, 5 bulbs, yellow variety
- 12.208 Onions, 5 bulbs, red variety
- 12.209 Onions, 5 bulbs, white variety
- 12.210 Onions, 10 bunching (scallions)
- 12.211 Leeks, 3 tops on
- 12.212 Garlic, 5 bulbs, leave short section of stem
- 12.213 Shallots, 5 bulbs, tops off
- 12.214 Radishes, 5 red skinned variety, tops on
- 12.215 Radishes, 5 white skinned variety, tops on
- 12.216 Radishes, 5 black skinned variety, tops on
- 12.217 Radishes, 5 any other color or novelty type, tops on
- 12.218 Parsnips, 3 tops off

- 12.219 Jerusalem Artichoke, 10 tubers
- 12.220 Peanuts, 3 plants with roots and tops
- 12.221 Potatoes, 10 green mountain white or yellow standard
- 12.222 Potatoes, 10 yellow fingerling varieties
- 12.223 Potatoes, 10 any other variety
- 12.224 Potatoes, 10 red variety
- 12.225 Sweet Potatoes, 10

### COLE CROPS

- 12.226 Cabbage, 2 heads, storage variety
- 12.227 Cabbage, 2 heads, Savoy
- 12.228 Cabbage, 2 heads, Drum Head
- 12.229 Cabbage, 2 heads, Chinese variety
- 12.230 Brussels Sprouts, 1 stalk with sprouts, leaves off
- 12.231 Kohlrabi, 3 tops on
- 12.232 Broccoli, 2 heads
- 12.233 Cauliflower, 1 head

### HERBS & LEAFY VEGETABLES

- 12.234 Swiss Chard, 1 plant potted, 4-10"
- 12.235 Swiss Chard, 1 plant, cut
- 12.236 Spinach, 1 plant potted, 4-10"
- 12.237 Spinach, 2 plants, cut
- 12.238 Lettuce, 1 head, Romaine cut
- 12.239 Lettuce, 1 head, crisp headed or loose headed variety, cut



- 12.240 Lettuce, 1 plant potted, 4-10", cos or loose leaf variety
- 12.241 Lettuce, 1 head, red or oak leaved or other variety, cut
- 12.242 Chives, 1 clump potted, 4-10"
- 12.243 Sweet Basil, 1 plant potted, 4-10"
- 12.244 Parsley, 1 clump potted, 4-10"
- 12.245 Any other herb, 1 clump, potted, 4-10"
- 12.246 Any other herb, 5 cut stems (display in water)
- 12.247 Other leafy vegetable, 2 plants, cut

### TOMATOES

- 12.248 Tomatoes, 3, large red
- 12.249 Tomatoes, 3, large yellow orange
- 12.250 Tomatoes, 5, red plum
- 12.251 Tomatoes, 5, yellow plum
- 12.252 Tomatoes, 8, small fruited, large red cherry
- 12.253 Tomatoes, 8, small fruited, small red cherry
- 12.254 Tomatoes, 8 cherry, other
- 12.255 Tomatoes, 8, small fruited, other varieties
- 12.256 Tomatoes, 8, grape tomatoes
- 12.257 Tomatoes, 8, red pear
- 12.258 Tomatoes, 12, husk
- 12.259 Tomatoes, 3, other variety
- 12.260 Tomatoes, 1, heaviest



## PEPPERS

- 12.261 Peppers, 3, *Blocky or bell, green*
- 12.262 Peppers, 3, *Blocky or bell, yellow*
- 12.263 Peppers, 3, *blocky or bell, red*
- 12.264 Peppers, 3, *blocky or bell, other color*
- 12.265 Peppers, 3, *tapered, green*
- 12.266 Peppers, 3, *tapered, red*
- 12.267 Peppers, 3, *tapered, other color*
- 12.268 Peppers, 3, *Jalapeño*
- 12.269 Peppers, 3, *Habanero*
- 12.270 Pepper, 3, *Cascabel*
- 12.271 Peppers, 3, *Hot Cherry*
- 12.271a Peppers, 3, *Tomatillo*
- 12.271b Peppers, 3, *any other small hot variety*

## CUCUMBERS

- 12.272 Cucumbers, 3, *slicing*
- 12.273 Cucumbers, 3, *Long European or Asian varieties*
- 12.274 Cucumbers, 3, *pickling*
- 12.275 Gherkins, 6
- 12.276 Cucumbers, 3, *novelty varieties*

## PODDED VEGETABLES (Leave 1/2" stems)

- 12.277 Lima Bean, 10 pods
- 12.278 String Beans, *Romano*, 10 pods
- 12.278a String Beans, *Italian Broad Beans*, 10 pods
- 12.279 String Beans, 12 pods, *narrow pod*
- 12.280 Yard Long, 5 pods
- 12.281 Dry Beans, 1 *pint glass jar*
- 12.282 Horticultural or Shell Beans, 10 pods

- 12.283 Wax or Yellow Podded Beans, 10 pods
- 12.284 Edible Soybeans, 10 pods
- 12.285 Peas, 10 pods, *and other variety*
- 12.286 Green Peas, 10 pods, *and other variety*
- 12.287 Okra, 10 pods

## PUMPKINS & SQUASH

- 12.288 Squash, 3, *summer, yellow-neck*
- 12.289 Squash, 3, *summer, Italian*
- 12.290 Squash, 3, *summer, scalloped (patty pan & scalloppini)*
- 12.291 Squash, 3, *winter, acorn*
- 12.292 Squash, 3, *winter, butternut*
- 12.293 Squash, 3, *winter, buttercup*
- 12.294 Squash, 2, *any other winter variety*
- 12.295 Squash, 3, *any ornamental variety*
- 12.296 Squash, 1, *heaviest, any variety*
- 12.297 Squash collection, *minimum of 5 different varieties*
- 12.298 Pumpkin, 2 *sugar*
- 12.299 Pumpkin, 2 *cheese*
- 12.300 Pumpkin, 2 *any other variety*
- 12.301 Pumpkin, 1 *heaviest, any variety*
- 12.302 Pumpkin collection, *minimum of 3 different varieties*
- 12.303 Luffa sponge, 3
- 12.304 Ornamental gourds, *minimum of 6 different varieties shown in a shallow basket*

## OTHER VEGETABLES

- 12.305 Eggplant, 3 *purple Black, standard (bread)*
- 12.306 Eggplant, 3 *white*
- 12.307 Eggplant, 3 *Asian (narrow)*
- 12.308 Eggplant, 3 *Bi-color*
- 12.309 Watermelon, 1
- 12.310 Cantaloupe, 1 *or Musk Melon*
- 12.311 Melon, 1, *or other variety*
- 12.312 Sweet Corn, 3 *ears, husks pulled back*
- 12.313 Ornamental Indian Corn, 3 *ears, husks pulled back*
- 12.314 Popcorn, 3 *ears, husks pulled back*
- 12.315 Sunflower, *largest diameter, 1 head no more than three stem*

## FRUITS

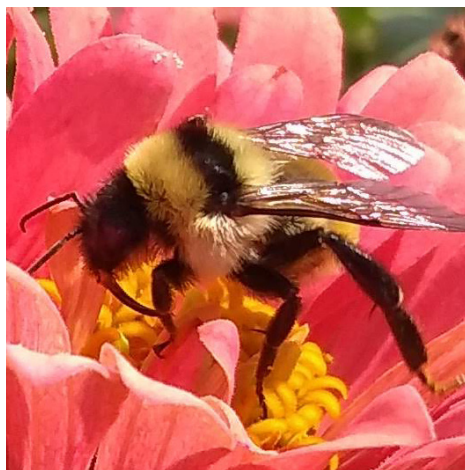
- 12.316 Raspberries, ½ *pint, ever bearing variety*
- 12.317 Strawberries, ½ *pint, ever bearing variety*
- 12.318 Grapes, 2 *clusters*
- 12.319 Apples, 3
- 12.320 Pears, 3
- 12.321 Figs, 3
- 12.322 Quince, 3
- 12.323 Rhubarb, 6 *stalks, leaves off*
- 12.324 Peaches, 3
- 12.325 Other

# APICULTURE

**RULES:** Only one entry per person. Honey must be in a one pound clear-cut jar with no labels on sides of jar. Adult & Youth entries accepted in all categories.

**PRIZES:** Engraved award to Best in Show. First, second, third and honorable mention ribbons in all categories.

**CATEGORIES:**  
P-1 Honey, all types





# FLOWER SHOW

**RULES:** Only ONE entry per person per category. Flowers and plant material need NOT be grown by exhibitor, unless specified. No Exhibit or part of any exhibit may be removed until final hour of fair. Artificial plant material and plant material protected by the New York State Conservation Laws may not be used. Adult & Youth entries accepted in all categories.

**PRIZES:** Engraved award to Best in Show. First, second, third and honorable mention ribbons in all categories.

## CATEGORIES

### WHAT THE "L"

40.101 An L-shaped arrangement designed in any container with fresh plant material (foliage and flowers) under 18 inches in either or both directions.

### ALL NATURAL

40.102 An arrangement of all dried plant material without artificial coloring.

### MEMORIES

40.103 A wall arrangement of dried plant material. May be in a container, a contrived container, picture frame, or on a plaque. To be hung against the wall. Largest dimension not to exceed 30".

### IT'S A SMALL WORLD

40.104 A small arrangement not to exceed 8 inches in any dimension. Fresh plant material predominating.

### MORNING STAR

40.105 A T-shaped arrangement including line, form and mass flowers with filler material. It should be 1½ to 2 times the height or width of the container. All materials must be grown and arranged by exhibitor.

### EVENING STAR

40.106 A T-shaped arrangement including line form and mass flowers with filler materials. May contain store bought or home grown flowers or both.

### CELEBRATION

40.107 A circular arrangement with a minimum diameter of 8 inches. All material must be grown and arranged by exhibitor.

### PARTY TIME

40.108 A circular arrangement with a minimum diameter of 8 inches. Materials may be store bought or a mixture of store bought and home grown.

### ALL PURPOSE

40.109 Loose arrangement of flowers in a vase. Flowers must be home grown and arranged by exhibitor.





# HORTICULTURE

**RULES:** Only ONE entry permitted per variety per class. LABEL ENTRIES, if possible, with name and variety. Labeled entries will be given greater consideration by judges. In cut flower classes, exhibitor must supply clear glass bottle or jar for cut plant materials. Containers must be in good proportion to support the horticultural specimen. No foliage is permitted under water. Adult & Youth entries accepted in all categories.

**PRIZES:** Engraved award to Best in Show. First, second, third and honorable mention ribbons in all categories.

## CATEGORIES

### CHRYSANTHEMUMS

- 40.201 Terminal spray, 1 single
- 40.202 Terminal spray, 1 decorative
- 40.203 Terminal spray, 1 pompom
- 40.204 Individual bloom, 1 incurve
- 40.205 Individual bloom, 1 decorative
- 40.206 Individual bloom, 1 spider
- 40.207 Individual bloom, 1 any other

### DAHLIAS

- 40.208 Large bloom, 1 over 8"
- 40.209 Medium bloom, 6" to 8"
- 40.210 Miniature bloom, under 4"
- 40.211 Small bloom, 4" to 6"
- 40.212 Pompom, 3 blooms under 2"

### MARIGOLDS

- 40.213 Large bloom, 1 over 3"
- 40.214 Small bloom, 1 under 3"

### ROSES

- 40.215 Miniatures, blooms
- 40.216 Miniatures, sprays
- 40.217 Hybrid Tea, blooms
- 40.218 Hybrid Tea, sprays
- 40.219 Grand flora, blooms
- 40.220 Grand flora, sprays
- 40.221 Floribunda, blooms
- 40.222 Floribunda, sprays
- 40.223 Miscellaneous bloom or spray or naturally grown, not disbudded

### MISCELLANEOUS

- 40.224 Any flower not listed, 1 bloom or spray, annual
- 40.225 Any flower not listed, 1 bloom or spray, perennial



### CONTAINER-GROWN PLANTS

- 40.226 Flowering plants, pot under 6"
- 40.227 Flowering plants, pot over 6"
- 40.228 Foliage plants, pot under 6"
- 40.229 Foliage plants, pot over 6"
- 40.230 African Violet, single plant, must be in bloom
- 40.231 Cacti, pot under 6"
- 40.232 Cacti, pot over 6"
- 40.233 Succulent, pot under 6"
- 40.234 Succulent, pot over 6"

### PLANTS IN HANGING CONTAINERS

- 40.235 Flowering plants, pot under 6"
- 40.236 Flowering plants, pot over 6"
- 40.237 Foliage plants, pot under 6"
- 40.238 Foliage plants, pot over 6"

### TERRARIUMS AND DISH GARDENS

- 40.239 Terrarium, covered clear container, 3 or more plants
- 40.240 Dish Garden, Cacti and succulent, 3 or more plants





# ENTER THE 2023 BLUE RIBBON COMPETITION TODAY!

**VISIT**

[BIT.LY/43DNGIV](https://bit.ly/43DNGIV)

**OR SCAN QR CODE  
BELOW TO REGISTER**

GET FREE ADMISSION TO COUNTY FAIR WITH YOUR BLUE RIBBON ENTRY



**QUEENS COUNTY FARM MUSEUM**  
Farmed Since 1697

7350 Little Neck Parkway, Floral Park, NY 11004 | 718-247-3276 | [queensfarm.org](https://queensfarm.org)